



General Description:

This amplifier is a **broadband power amplifier** designed for CW/Digital/Pulse signals and general-purpose amplification.

Using advanced high power density GaN semiconductor devices, these high-performance amplifiers achieve high efficiency, high gain, and wide dynamic range.

Like all Elite RF amplifiers, the product comes with an industry leading **3- year warranty**

Features

Wide Freq. Range
High Output Power
High Gain
High Reverse Isolation
Built-in Protection
Enable/Disable input (ground to disable)

Indicator options

DC Power
Temp Fault

Protections

Thermal Overload
Over Voltage
Reverse Polarity

ELECTRICAL SPECIFICATIONS

Parameter	Symbol	Min	Typ	Max	Unit
Frequency Range	BW	20		6000	MHz
Output Power CW	Psat		10		Watt
Output Power at 1 dB Compression	P1dB		5		Watt
Small Signal Gain	Gp		48		dB
Gain Flatness	Delta Gp 1		+/- 3		dB
Input VSWR	S11		2:1		Ratio
IMD @ 2 GHz @ .1 watt/tone / 1 MHz spacing	IP3		47		dBm
Harmonics	H		-20		dBc
Spurious Signals	Spur		-60		dBc
Operating Voltage	VDC	49	50	51	VDC
Current at 10 watts	Current		2.5		Amps
Class of Operation	C		AB		Class
Noise Figure	NF		5		dB
Large Signal Gain	Lsg		40		dB
Max Load VSWR @ 10 Watts	ML		6:1		Ratio

ENVIRONMENTAL CHARACTERISTICS

Parameter	Symbol	Min	Typ	Max	Unit
Operating Case Temperature	Tc	-20		+60	Deg. C
Storage Temperature	Tstg	-40		+85	Deg. C
Relative Humidity (non-condensing)	RH			95	%
Altitude	ALT			10,000	Feet
Vibration/Shock	VI /SH				Normal Truck Transport

MECHANICAL CHARACTERISTICS

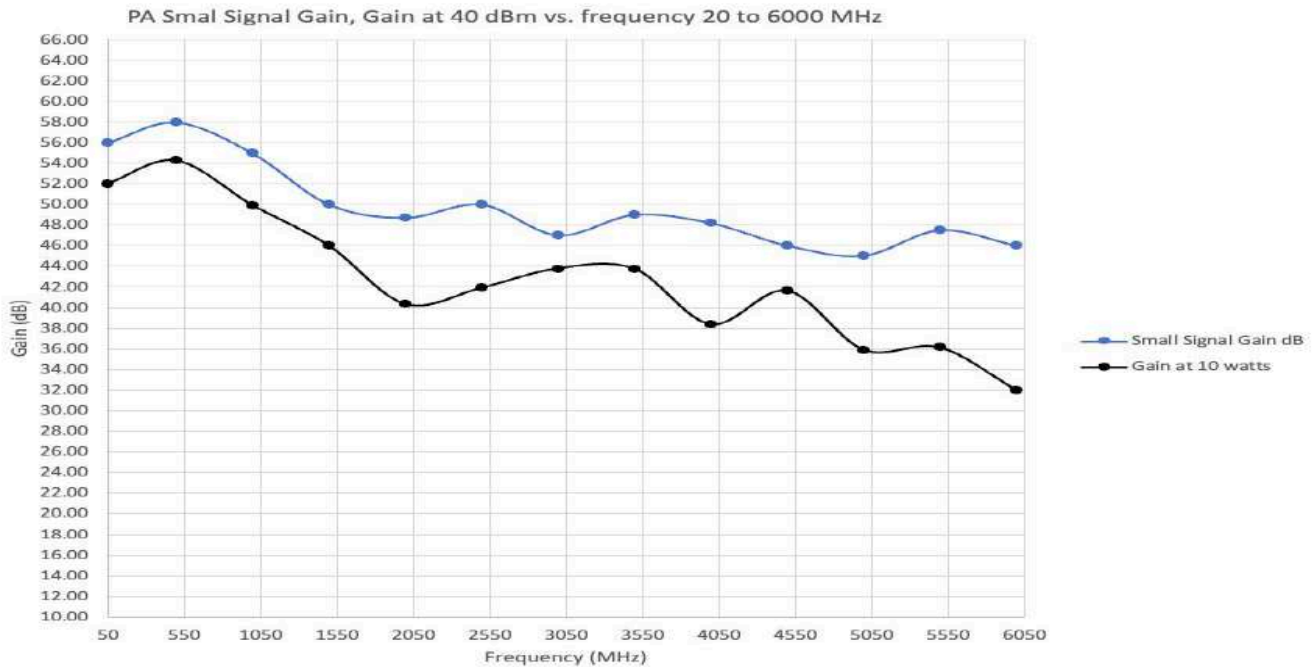
Parameter	Symbol	Min	Typ	Max	Unit
Dimensions	Dim		6.0 x 4.0 x 1.0		Inches
Weight	Wt.		1		lbs.
Connectors In/Out	RF Conn		SMA/SMA		-
Cooling	Th		Heat sink required		-

OPTIONS

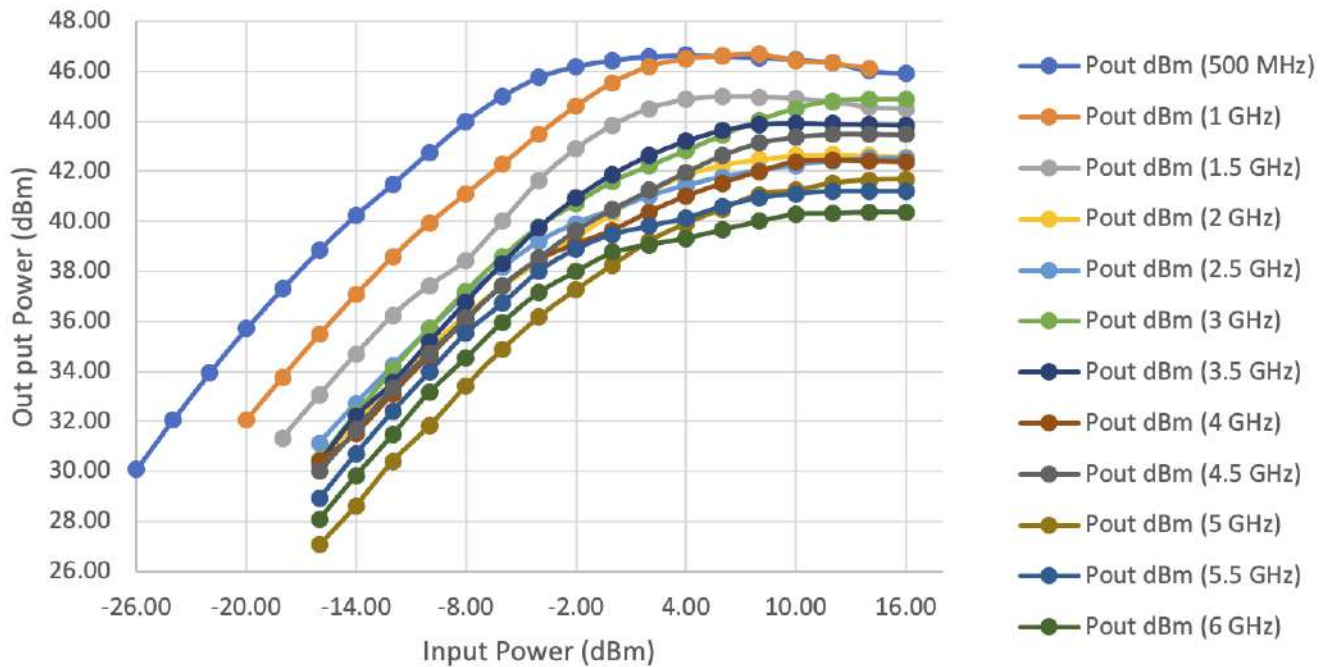
Parameter	Add suffix to part number
Heat sink and fans	- H
Isolator with forward and reverse voltage outputs	N/A
TTL Input Trigger	- T



Test Data Conditions: +25 degrees ambient / 50 VDC



Output Power vs. Input Power



Elite RF LLC

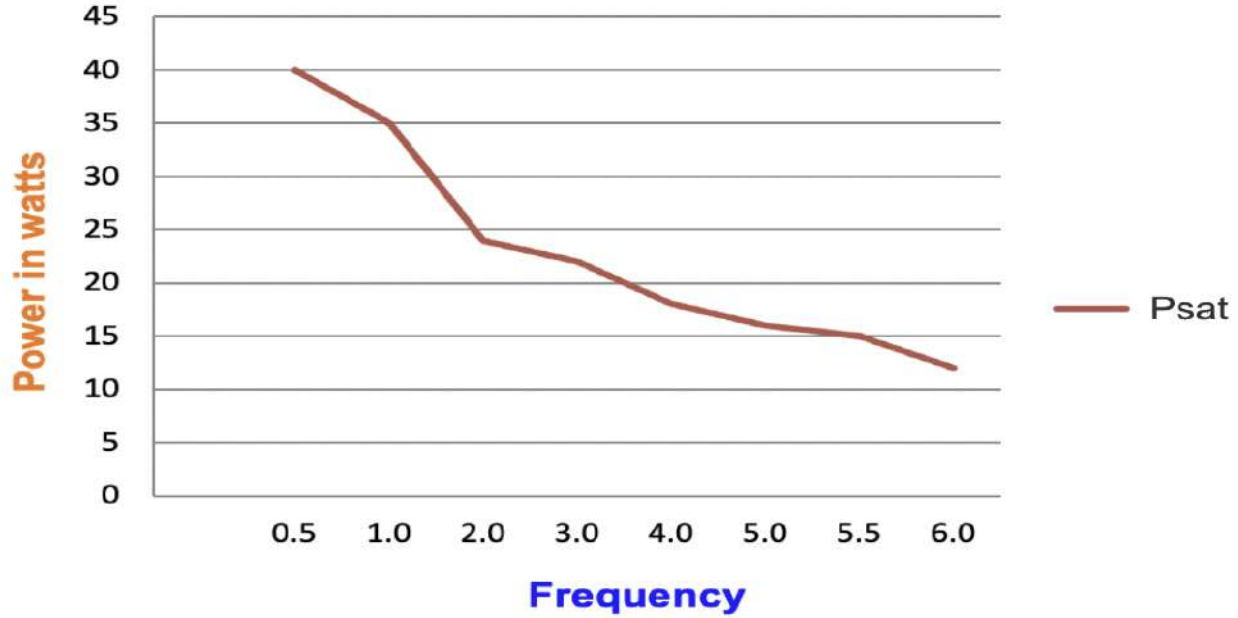
1700 Tower Drive, Hanover Park, IL. 60133

Call us for customer service/technical support at: 847-592-6350 Order or email us on-line at www.eliterf.com

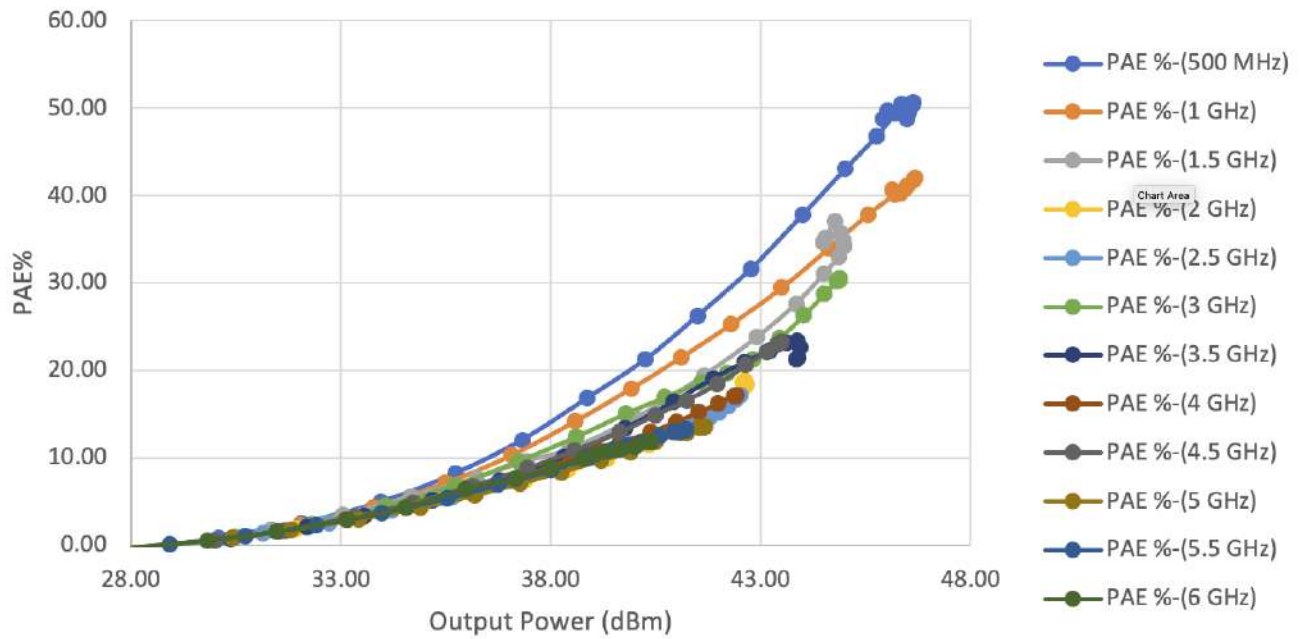


Test Data Conditions: +25 degrees ambient / 50 VDC

Psat vs. Frequency



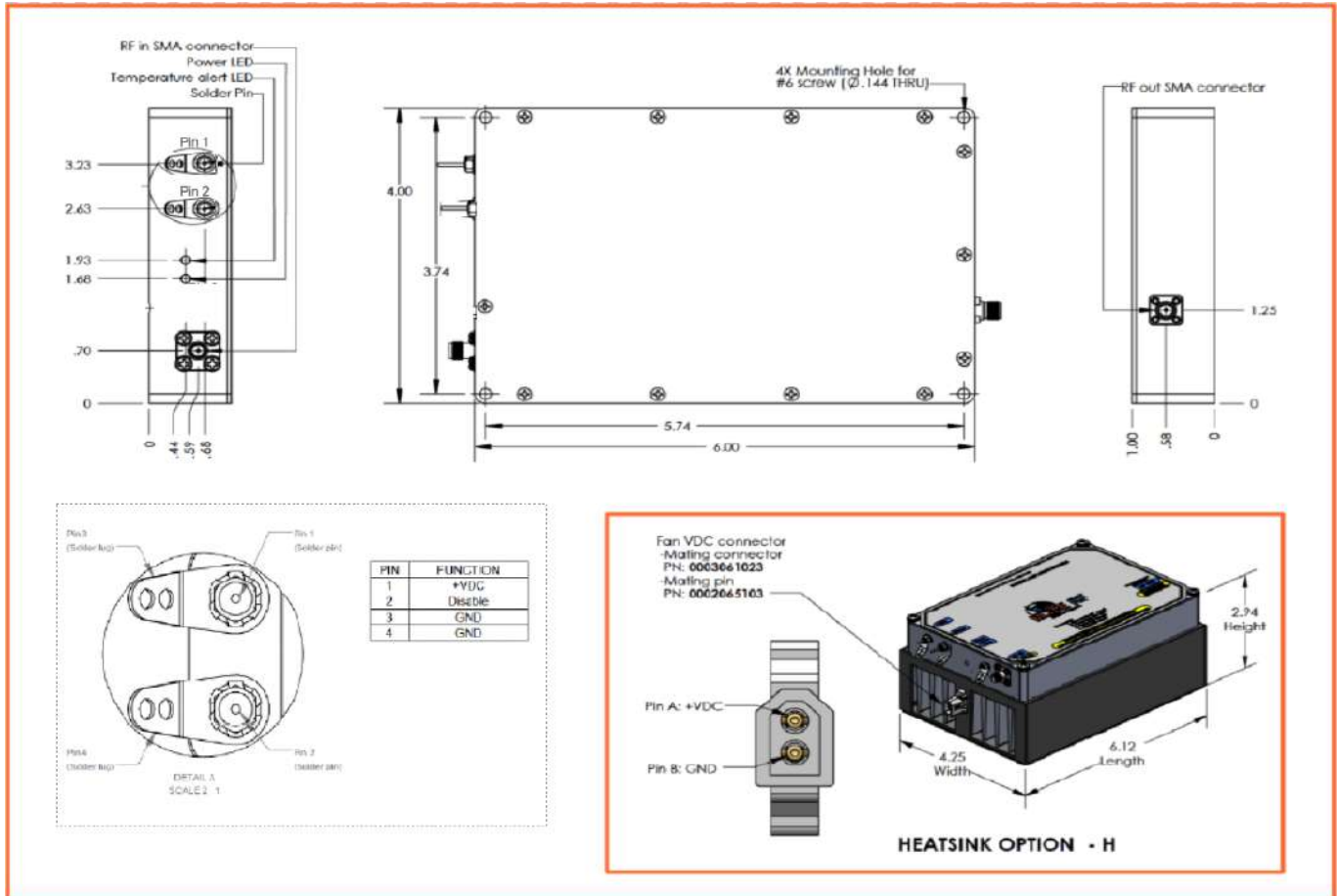
PAE% vs. Output Power



Elite RF LLC

1700 Tower Drive, Hanover Park, IL. 60133
 Call us for customer service/technical support at: 847-592-6350 Order or
 email us on-line at www.eliterf.com

Mechanical Drawings



Model Options

MB.026.0G404050

MB.026.0G404050-H

MB.026.0G404050-T

MB.026.0G404050-W

AB.026.0G4040AC

Product Description

Standard model

Standard model mounted on heat-sink with fans

Standard model with TTL input pulse port

Standard model with water cooling connections

Standard model mounted in 19" cabinet with heat-sink, fans and power supply

Elite RF welcomes your custom requirement, please contact us so we can put our engineering team to work for you.



Elite RF LLC

1700 Tower Drive, Hanover Park, IL. 60133

Call us for customer service/technical support at: 847-592-6350 Order or email us on-line at www.eliterf.com

Rev 2 11/3/2023:
Specifications subject to change, consult sales for latest information

ECCN:3A001.b.4
USHTS: 8543.70.8000