

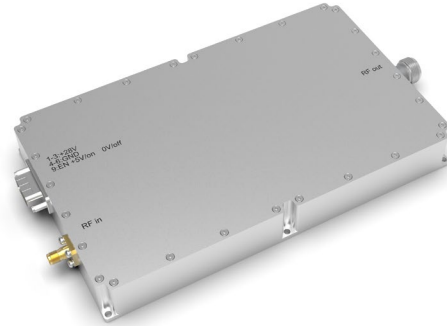
8= ⋯ ‡ #‡ ⋯h ⋯ U

➤ **7**

- Class AB GaN solid state design
- Built-in protection circuits
- High reliability and ruggedness

➤ **Applications**

- Satcom
- EMC



➤ **Electrical Specifications**

Parameter	Specification	Notes
Frequency	18-26.5GHz	
Output Power	20W Min.	
P1dB	4W Min.	
Gain	44dB Min.	
Gain Flatness	± 4dB	
Input VSWR	2.5:1 Max	50 Ω
Harmonics	-15 dBc Max.	
Spurious	-55 dBc Typ.	
Power Supply	20V	
Power Consumption	350WMax.	At rated output
Input Power	5dBm Max.	

➤ **Environmental Characteristics**

Parameter	Specification	Notes
Operation Temperature	-10 - +40 °C	
Storage Temperature	-40 - +75 °C	
Relative Humidity	5 - 95%	

➤ **Other Specifications**

Parameter	Specification	Notes
Dimensions	240x180x80mm	Just for reference
In/Out Connector	2.92-K/WR42	
Weight	10kg Max	
Cooling	Fan Cooling	
Control interface	SUB-7W2	

➤ **Outline Drawing**

Just for Reference

