

**26.5-40GHz 20W CW Power Amplifier Module**

➤ **Features**

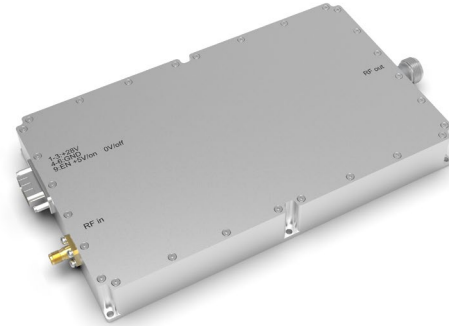
- Class AB GaN solid state design
- Built-in protection circuits
- High reliability and ruggedness

➤ **Applications**

- Satcom
- EMC

➤ **Electrical Specifications**

Parameter	Specification	Notes
Frequency	26.5-40GHz	
Output Power	20W Typ.	
P1dB	4W Min.	
Gain	44dB Min.	
Gain Flatness	± 5dB	
Input VSWR	2.5:1 Max	50 Ω
Harmonics	-15 dBc Max.	
Spurious	-55 dBc Typ.	
Power Supply	20V	
Power Consumption	400WMax.	At rated output
Input Power	5dBm Max.	



➤ **Environmental Characteristics**

Parameter	Specification	Notes
Operation Temperature	-10 - +40 °C	
Storage Temperature	-40 - +75 °C	
Relative Humidity	5 - 95%	

➤ **Other Specifications**

Parameter	Specification	Notes
Dimensions	240x180x80mm	Just for Reference
In/Out Connector	2.92-K/WR28	
Weight	10kg Max	
Cooling	Fan Cooling	
Control interface	SUB-7W2	

➤ **Outline Drawing**

**Just for Reference**

