

**2-18GHz 25W CW Power Amplifier Module**

➤ **Features**

- Class AB GaN solid state design
- Built-in protection circuits
- High reliability and ruggedness

➤ **Applications**

- Satcom
- EMC

➤ **Electrical Specifications**

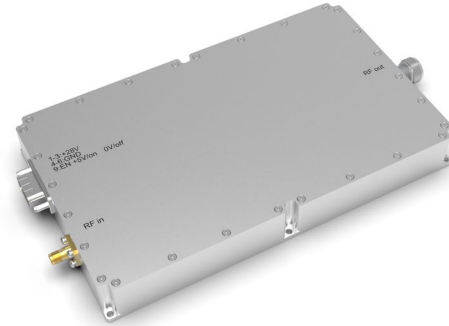
Parameter	Specification	Notes
Frequency	2-18GHz	
Output Power	25W Min.	
Gain	44dB Min.	
Gain Flatness	±4dB	
Input VSWR	2:1 Max	50 Ω
Harmonics	-12 dBc Typ.	
Spurious	-55 dBc Typ.	
Power Supply	28V	
Power Consumption	350WMax.	At rated output
Input Power	5dBm Max.	

➤ **Environmental Characteristics**

Parameter	Specification	Notes
Operation Temperature	-10 - +40 °C	
Storage Temperature	-40 - +75 °C	
Relative Humidity	5 - 95%	

➤ **Other Specifications**

Parameter	Specification	Notes
Dimensions	200x100x23mm	
In/Out Connector	SMA-F/ SMA-F	
Weight	2kg Max	
Cooling	Fan Cooling	
Control interface	SUB-7W2	



➤ Outline Drawing

Just for Reference

