

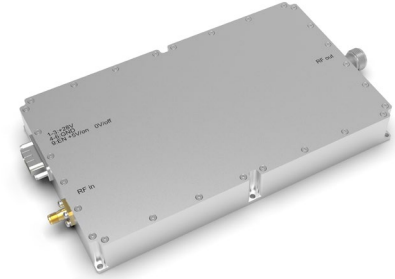
2-6GHz 50W CW Power Amplifier

Features

- Broad band 2-6GHz
- Psat =50 Watt Min.
- High reliability and ruggedness

Applications

- Communications
- Defense



➤ **Electrical Specifications**

Parameter	Specification	Notes
Frequency	2-6GHz	
Psat	50W Min.	
Gain	47dB Min.	
Gain Flatness	± 3dB	
Input VSWR	2:1 Max	50 Ω
Harmonics	-12 dBc Typ.	
Spurious	-60 dBc Typ.	
Power Supply	28V	
Power Consumption	500W Max.	
Input Power	5dBm Max.	

➤ **Environmental Characteristics**

Parameter	Specification	Notes
Operation Temperature	-10 - +40 °C	
Storage Temperature	-40 - +75 °C	
Relative Humidity	5 - 95%	

➤ **Other Specifications**

Parameter	Specification	Notes
Dimensions	200x120x22mm	Just for Reference
In/Out Connector	SMA-F/N-F	
Weight	2kg Max	
Cooling	Fan Cooling	
Control interface	-	

➤ Outline Drawing

Just for Reference

