

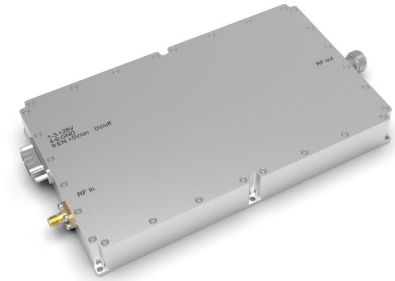
**6-18GHz 50W CW Power Amplifier Module**

➤ **Features**

- Class AB solid state design
- Wideband and High power
- Protected against over heat/ over current

➤ **Applications**

- Communication
- EMC



➤ **Electrical Specifications**

Parameter	Specification	Notes
Frequency	6-18GHz	
Output Power	50W Min.	
P1dB	20W Typ.	
Gain	47dB Min.	
Gain Flatness	± 4dB	
Input VSWR	2:1 Max	50 Ω
Harmonics	-12 dBc Typ.	
Spurious	-60 dBc Typ.	
Power Supply	28V	
Power Consumption	300WMax.	At rated output
Input Power	5dBm Max.	

➤ **Environmental Characteristics**

Parameter	Specification	Notes
Operation Temperature	0 - +40 °C	
Storage Temperature	-20 - +75 °C	
Relative Humidity	5 - 95%	

➤ **Other Specifications**

Parameter	Specification	Notes
Dimensions	3U	
In/Out Connector	SMA-F/N-F	
Weight	5kg Max	
Cooling	Fan Cooling	
Control interface	-	