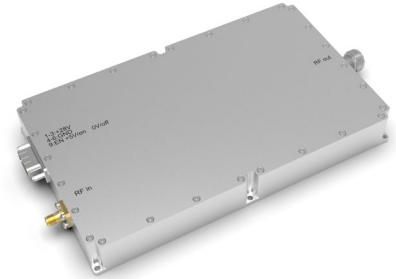


25-28GHz 200W CW Power Amplifier
➤ Features

- Class AB solid state design
- Built-in Fan Cooling
- Protected against over heat/ over current

➤ Applications

- Communication
- EMC


➤ Electrical Specifications

Parameter	Specification	Notes
Frequency	25-28GHz	
Psat	200W Min.	
Gain	53dB Min.	
Gain Flatness	± 3dB	
Input VSWR	2:1 Max	50 Ω
Harmonics	-25 dBc Typ.	
Spurious	-55 dBc Typ.	
Power Supply	20V	
Power Consumption	3000W Max.	At rated output
Input Power	+5dBm Max.	

➤ Environmental Characteristics

Parameter	Specification	Notes
Operation Temperature	0 - +40 °C	
Storage Temperature	-20 - +75 °C	
Relative Humidity	5 - 95%	

➤ Other Specifications

Parameter	Specification	Notes
Dimensions	6U	
In/Out Connector	2.92-F/WR34	
Weight	50kg Max	
Cooling	Fan Cooling	

➤ **Outline Drawing**

TBD